

## ENCLOSURES

# OLYMPIAN™



## CAE – SUPER SOUND ATTENUATED ENCLOSURES FOR GAS GENERATOR SETS

**G30F3–G150G1  
G30F3S–G100F3S**

These super sound attenuated, factory designed and installed enclosures are of rugged construction and sound attenuated down to extremely quiet levels. They incorporate internally mounted silencers for safety and aesthetic value.

### FEATURES

#### ROBUST/HIGHLY CORROSION RESISTANT CONSTRUCTION

- Zinc plated or stainless steel fasteners
- Black zinc die cast locks and hinges tested and proven to withstand extreme conditions of corrosion
- Body made from steel components treated with polyester powder coating

#### EXCELLENT ACCESS FOR MAINTENANCE

- Large cable entry area for installation ease
- Vertically hinged doors allow full 180° opening rotation
- Lube oil and coolant drains piped to edge of enclosure and terminated with drain valves
- Two large side doors on each side for excellent maintenance access
- Radiator fill
- Radiator cleaning through removable access plate (G150G1)
- "Lift-off" hinges allow doors to be removed if required

#### SECURITY AND SAFETY

- Exhaust silencing system totally enclosed for operator safety
- Roof outlet exhaust with roof aperture and rain cap
- Lockable access doors
- Cooling fan and battery charging alternator fully guarded
- Covers provided for "rodent proofing"

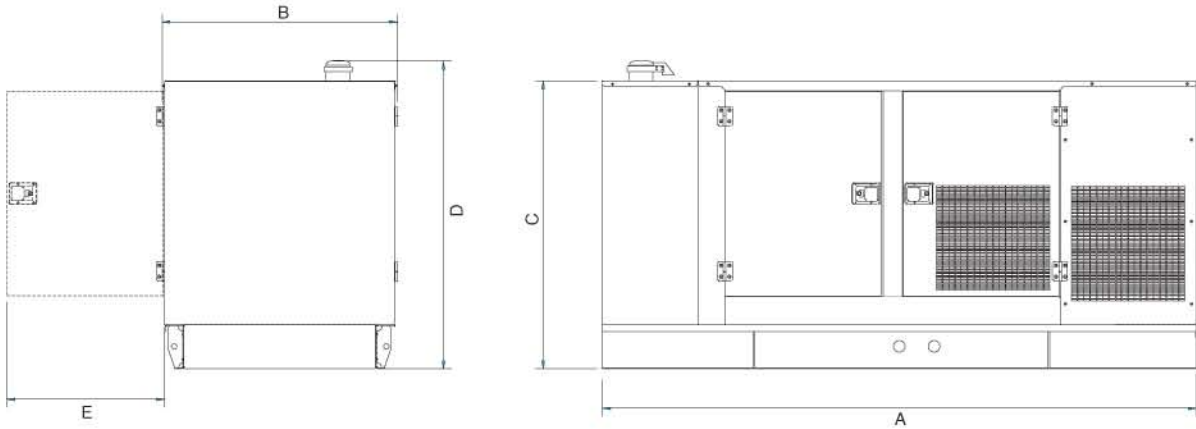
#### TRANSPORTABILITY

- Lifting points on baseframe

#### OPTIONS

- Emergency stop push button (red) mounted flush on exterior enclosure wall
- Control panel viewing window in a lockable access door

LEHF2757-06 (10-05)



## SUPER SOUND ATTENUATED WEATHERPROOF ENCLOSURES DIMENSIONS AND WEIGHTS

| Generator Set Model | A<br>in (mm) | B<br>in (mm)  | C<br>in (mm) | D<br>in (mm)  | E<br>in (mm) | Weight*<br>lb (kg) |
|---------------------|--------------|---------------|--------------|---------------|--------------|--------------------|
| G30F3               | 106.4 (2700) | 44.5 (1128.5) | 52.4 (1330)  | 56.6 (1437.1) | 24.7 (625.8) | 2304 (1045)        |
| G40F3               | 106.4 (2700) | 44.5 (1128.5) | 52.4 (1330)  | 56.6 (1437.1) | 24.7 (625.8) | 2425 (1100)        |
| G50F3               | 106.4 (2700) | 44.5 (1128.5) | 52.4 (1330)  | 56.6 (1437.1) | 24.7 (625.8) | 2469 (1120)        |
| G60F3               | 122.1 (3100) | 48.4 (1228.5) | 59.5 (1510)  | 63.7 (1616)   | 32.5 (825.3) | 3349 (1519)        |
| G80F3               | 122.1 (3100) | 48.4 (1228.5) | 59.5 (1510)  | 63.7 (1616)   | 32.5 (825.3) | 3547 (1609)        |
| G100F3              | 122.1 (3100) | 48.4 (1228.5) | 59.5 (1510)  | 63.7 (1616)   | 32.5 (825.3) | 3572 (1620)        |
| G125G1              | 122.1 (3100) | 48.4 (1228.5) | 59.5 (1510)  | 63.7 (1616)   | 32.5 (825.3) | 4189 (1900)        |
| G150G1              | 134.7 (3421) | 48.7 (1238)   | 70.8 (1800)  | 76.0 (1930)   | 32.5 (825.3) | 4453 (2020)        |
| G30F3S              | 106.4 (2700) | 44.5 (1128.5) | 52.4 (1330)  | 56.6 (1437.1) | 24.7 (625.8) | 2425 (1100)        |
| G35F3S              | 106.4 (2700) | 44.5 (1128.5) | 52.4 (1330)  | 56.6 (1437.1) | 24.7 (625.8) | 2469 (1120)        |
| G45F3S              | 106.4 (2700) | 44.5 (1128.5) | 52.4 (1330)  | 56.6 (1437.1) | 24.7 (625.8) | 2579 (1170)        |
| G55F3S              | 122.1 (3100) | 48.4 (1228.5) | 59.5 (1510)  | 63.7 (1616)   | 32.5 (825.3) | 3437 (1559)        |
| G75F3S              | 122.1 (3100) | 48.4 (1228.5) | 59.5 (1510)  | 63.7 (1616)   | 32.5 (825.3) | 3547 (1609)        |
| G90F3S              | 122.1 (3100) | 48.4 (1228.5) | 59.5 (1510)  | 63.7 (1616)   | 32.5 (825.3) | 3847 (1745)        |
| G100F3S             | 122.1 (3100) | 48.4 (1228.5) | 59.5 (1510)  | 63.7 (1616)   | 32.5 (825.3) | 3968 (1800)        |

## SOUND LEVELS

| Generator Set Model | 1800 rpm (60 Hz) |                 |               |                 |               |                 |
|---------------------|------------------|-----------------|---------------|-----------------|---------------|-----------------|
|                     | 50 ft (15 m)     |                 | 23 ft (7 m)   |                 | 3 ft (1 m)    |                 |
|                     | No Load (dBA)    | Full Load (dBA) | No Load (dBA) | Full Load (dBA) | No Load (dBA) | Full Load (dBA) |
| G30F3, G30F3S       | 53.1             | 55.65           | 59.1          | 61.65           | 72.5          | 74.15           |
| G35F3S              | 53.1             | 56.1            | 59.1          | 62.1            | 72.5          | 74.3            |
| G40F3               | 53.1             | 56.6            | 59.1          | 62.6            | 72.5          | 74.6            |
| G45F3S              | 53.1             | 57.4            | 59.1          | 63.4            | 72.5          | 74.8            |
| G50F3               | 53.1             | 59.2            | 59.1          | 65.2            | 72.5          | 76.7            |
| G55F3S, G60F3       | 57.9             | 60.4            | 63.9          | 66.4            | 80.6          | 81.8            |
| G75F3S, G80F3       | 57.9             | 61.0            | 63.9          | 67.0            | 80.6          | 82.7            |
| G90F3S              | 58.3             | 61.1            | 64.3          | 67.1            | 83.8          | 84.1            |
| G100F3, G100F3S     | 58.3             | 61.3            | 64.3          | 67.3            | 83.8          | 84.0            |
| G125G1              | 61.0             | 64.0            | 67.0          | 70.0            | 83.5          | 85.9            |
| G150G1              | 66.1             | 68.3            | 72.1          | 74.3            | 85.5          | 87.1            |

The sound pressure level data shown is quoted as free field and is for guidance only. Actual levels produced may vary according to site conditions.

[www.CAT-ElectricPower.com](http://www.CAT-ElectricPower.com)



PO Box 5047  
BALTIMORE, MD 21220  
P: 410.686.3120  
F: 410.686.4271

[WWW.NEVERINTHEDARK.COM](http://WWW.NEVERINTHEDARK.COM)

Market: N. America  
LEHF2757-06 (10-05)

© 2005 Caterpillar  
All rights reserved.  
Printed in U.S.A.

Materials and specifications are subject to change without notice. The International System of Units (SI) is used in this publication.